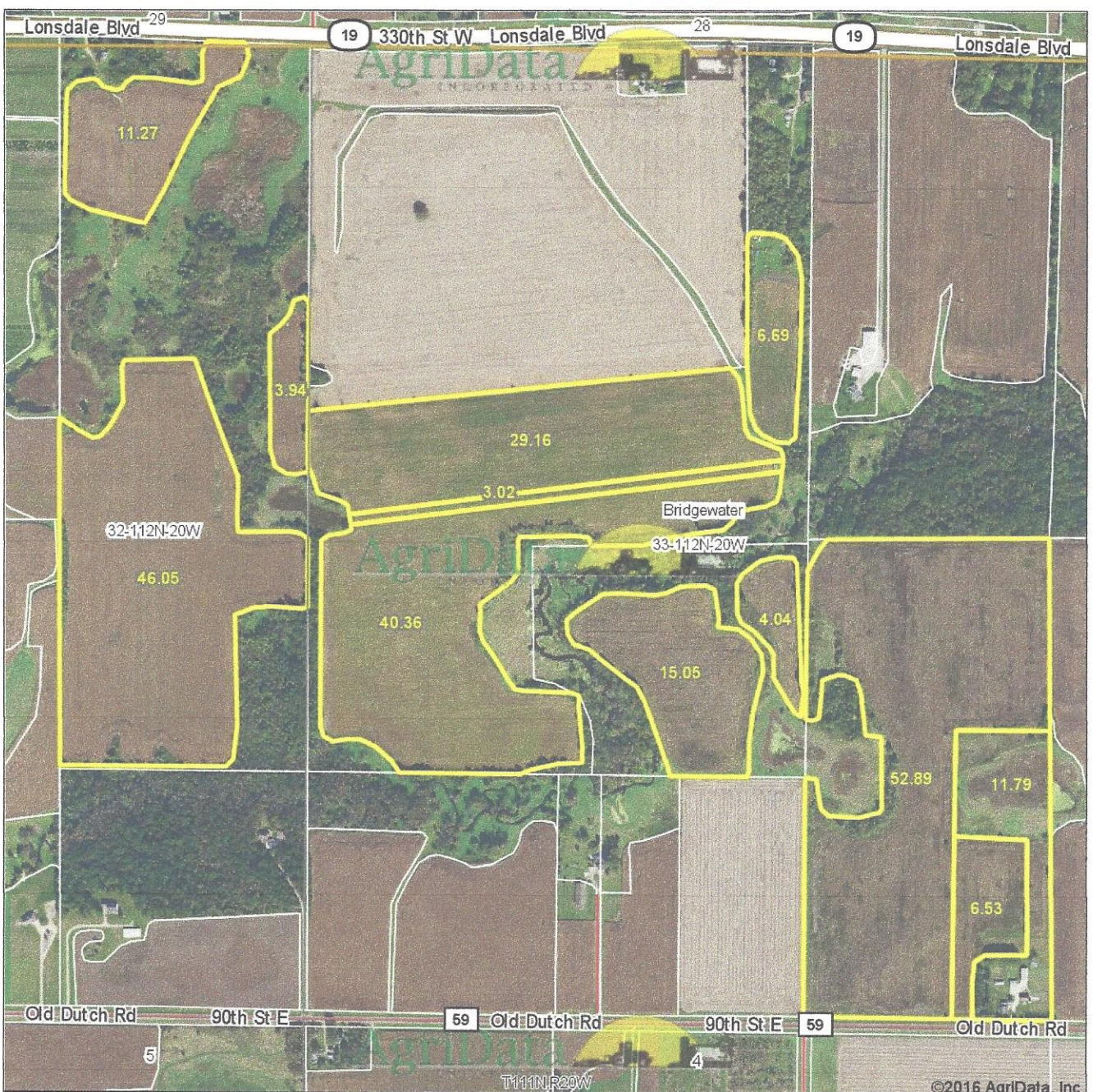


Aerial Map



map center: 44° 27' 50.56, -93° 14' 12.16



Maps Provided By:

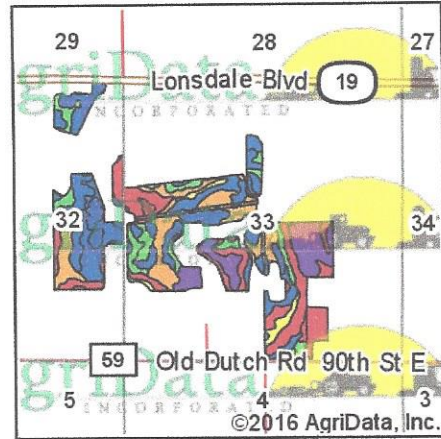
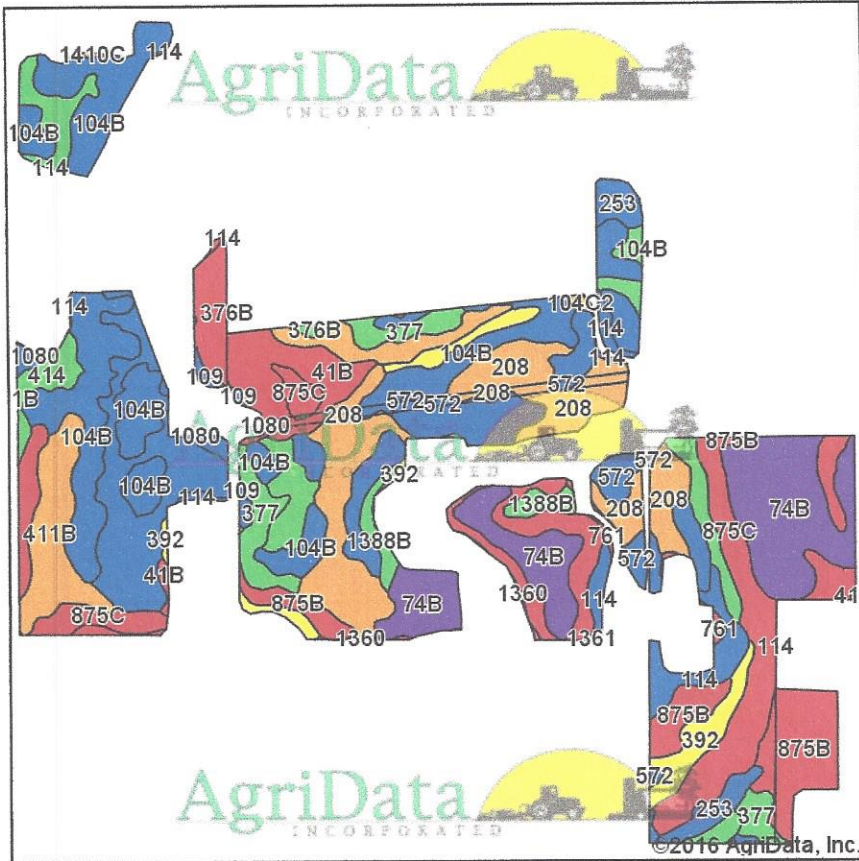
 CUSTOMIZED ONLINE MAPPING
 © AgriData, Inc. 2016 www.AgriDataInc.com

33-112N-20W
Rice County
Minnesota



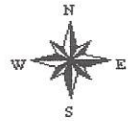
Field borders provided by Farm Service Agency as of 5/21/2008.

Soils Map



State: **Minnesota**
 County: **Rice**
 Location: **33-112N-20W**
 Township: **Bridgewater**
 Acres: **219**
 Date: **9/30/2016**

Maps Provided By:



Soils data provided by USDA and NRCS.

Area Symbol: MN131, Soil Area Version: 10

Code	Soil Description	Acres	Percent of field	PI Legend	Non-Irr Class *c	Productivity Index	Bromegrass alfalfa hay	Corn	Oats	Soybeans
104B	Hayden loam, 2 to 6 percent slopes	35.51	16.2%		Ile	85	5.3	168	80	51
875C	Hawick-Estherville complex, 6 to 12 percent slopes	27.13	12.4%		IVs	39	2.7	77	52	23
74B	Dickinson fine sandy loam, 1 to 6 percent slopes	24.16	11.0%		IIIe	60	5.2	119	81	36
208	Kato silty clay loam, 0 to 1 percent slopes	23.82	10.9%		IIw	75	4.4	149	76	45
572	Lowlein sandy loam, 1 to 5 percent slopes	15.89	7.3%		Ile	89	6.4	176	94	53
109	Cordova clay loam, 0 to 2 percent slopes	14.18	6.5%		IIw	*m 87				
875B	Hawick-Estherville complex, 2 to 6 percent slopes	12.63	5.8%		IVs	42	3.5	83	62	25
41B	Estherville sandy loam, 2 to 6 percent slopes	11.39	5.2%		IIIs	*m 44				
377	Merton silt loam, 1 to 3 percent slopes	8.12	3.7%		I	99	6.4	196	94	59
411B	Waukegan silt loam, 2 to 6 percent slopes	7.92	3.6%		Ile	75	5.1	149	82	45
392	Biscay clay loam, 0 to 2 percent slopes	6.65	3.0%		IIw	*m 69				
114	Glencoe clay loam, 0 to 1 percent slopes	6.26	2.9%		IIIw	*m 86				
414	Hamel loam, 0 to 2 percent slopes	5.44	2.5%		IIw	94				
253	Maxcreek silty clay loam, 0 to 1 percent slopes	4.48	2.0%		IIw	88	4.5	174	78	53
104C2	Hayden loam, 6 to 12 percent slopes, eroded	4.00	1.8%		IIIe	71	4.6	141	72	43
376B	Moland silt loam, 1 to 4 percent slopes	3.45	1.6%		Ile	98	6.1	194	92	59
1388B	Terril loam, 2 to 6 percent slopes	2.70	1.2%		Ile	*m 99				
301B	Lindstrom silt loam, 2 to 6 percent slopes	2.69	1.2%		Ile	99	6	196	90	59
382B	Blooming silt loam, 2 to 6 percent slopes	0.79	0.4%		Ile	91	6	180	90	55
1360	Rushriver fine sandy loam, 0 to 1 percent slopes, frequently flooded	0.75	0.3%		Vw	20				
761	Epsom silty clay loam, 0 to 2 percent slopes, frequently flooded	0.62	0.3%		VIw	20				

Maps Provided By:



1080	Klossner, Okoboji, and Glencoe soils, ponded, 0 to 1 percent slopes	0.34	0.2%		VIIIw	*m 5				
1410C	Racine silt loam, moderately wet, 6 to 12 percent slopes, eroded	0.08	0.0%		IIIe	76	4.9	150	73	46
Weighted Average						*m 71	3.7	108.6	59.3	32.8

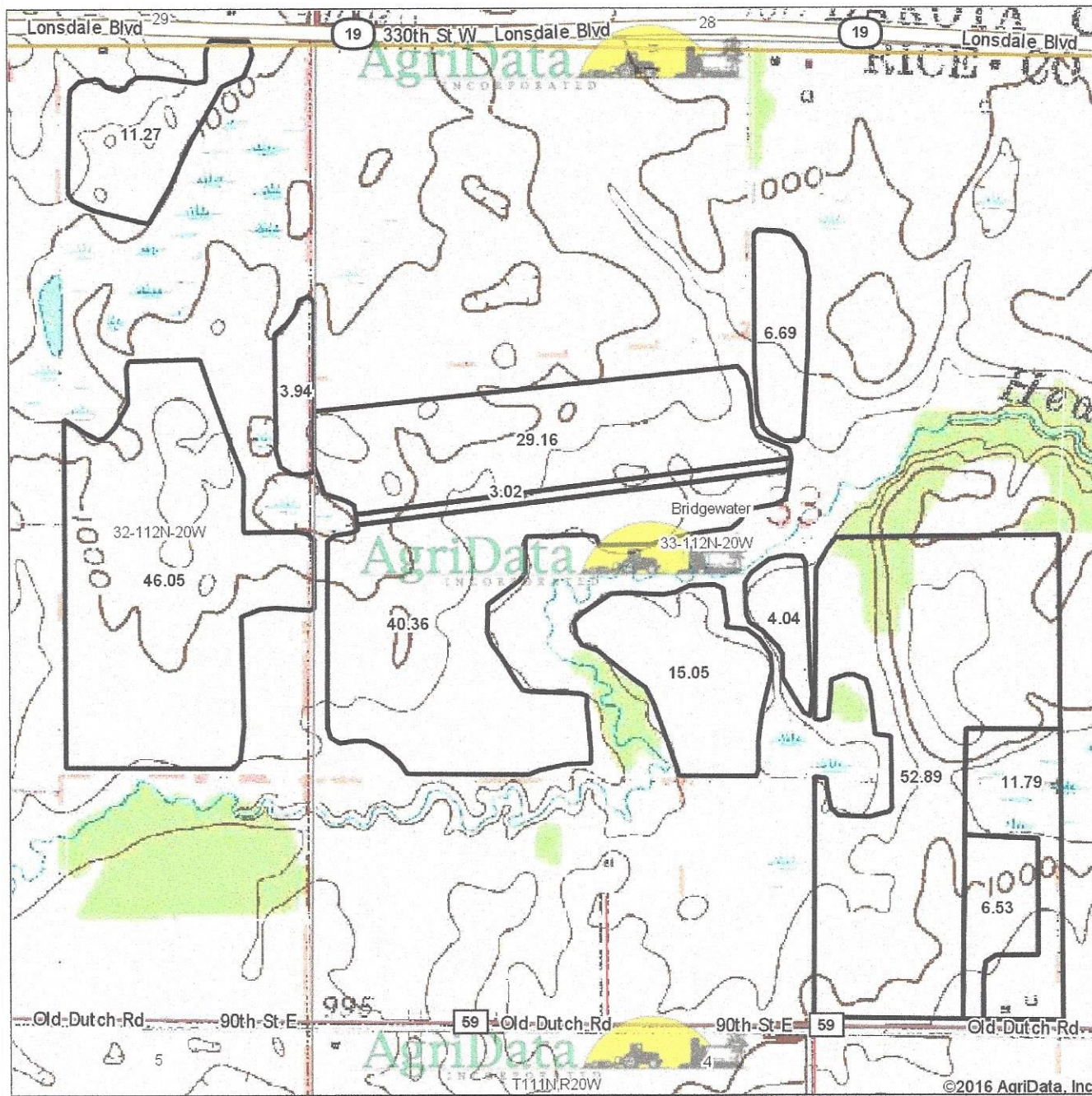
Area Symbol: MN131, Soil Area Version: 10

*m: Productivity index updated on 3/14/2016

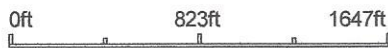
*c: Using Capabilities Class Dominant Condition Aggregation Method

Soils data provided by USDA and NRCS.

Topography Map



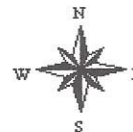
map center: 44° 27' 50.56, -93° 14' 12.16



33-112N-20W
Rice County
Minnesota

Maps Provided By:

 CUSTOMIZED ONLINE MAPPING
 © AgriData, Inc. 2016 www.AgriDataInc.com



9/30/2016

Field borders provided by Farm Service Agency as of 5/21/2008.